

Referral Pathways

Referrals to the Foundations for Futures program can be made by:

Public and independent primary schools

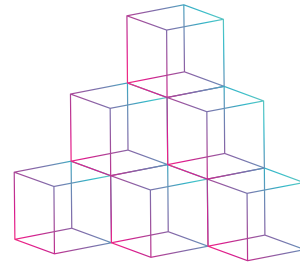
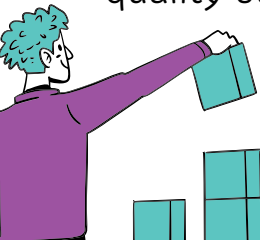
The Department for Education

The Department of Human Services

The Department for Child Protection

By partnering with Little Petal, schools gain:

- A trusted, qualified team supporting children's engagement and emotional growth
- Access to a dedicated off-site therapeutic learning space
- Reduced pressure on school staff through shared planning and coordination
- Regular supervision, reporting, and reflective review to ensure quality outcomes



Let's build the foundations today for the future every child deserves.



contact@littlepetal.com.au

+61 8 8246 7114

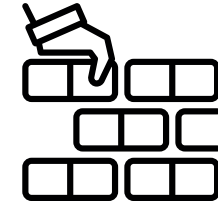
www.littlepetal.com.au



SCAN NOW FOR A REFERRAL



BUILDING PATHWAYS FOR CHILDREN



FOUNDATIONS FOR FUTURES

A 10-week Early Intervention Program



Little Petal
Your Family Support Team

Delivered by Little Petal – a South Australian organisation specialising in inclusive, disability- and trauma-informed, relationship-based practice.

EVERY CHILD DESERVES THE OPPORTUNITY TO THRIVE.

FOUNDATIONS FOR FUTURES IS A 10-WEEK HYBRID EARLY INTERVENTION PROGRAM

Supporting primary school children aged 5-12 years with complex behaviours related to disability and trauma.

It is designed to strengthen engagement, participation, and wellbeing for children whose needs may fall outside the capacity of mainstream schooling.

The program complements your school's existing supports by combining curriculum-based learning, therapeutic support, and life skills development through both on-site and off-site sessions.

Our multidisciplinary team includes:

- Family Engagement and Support Educators
- Accredited Social Workers
- Play Therapists and Developmental Educators

Delivery model

- **On-site:** one-to-one or small-group support in a low-stimulus learning space at school
- **Off-site:** therapeutic and capacity-building sessions in community or home-based settings

Our approach

- Disability- and trauma-informed and developmentally responsive
- Inclusive and culturally respectful
- Collaborative with educators, families, and allied professionals

PROGRAM COMPONENTS

- Collaborative development of the child's Foundations Plan, created with input from the child and their family to ensure goals are meaningful and individualised.
- Curriculum-aligned learning tailored to each child's Individual Learning Plan (ILP), supporting engagement and progress in core learning areas.
- Life skills development focused on building resilience, emotional regulation, social connection, and problem-solving abilities.
- Therapeutic and behavioural supports guided by disability- and trauma-informed frameworks to promote safety, stability, and growth.

Program goals

- Strengthen engagement in learning
- Address behaviours impacting participation
- Foster emotional regulation and confidence
- Support family capacity and inclusion
- Promote long-term wellbeing and school connection

